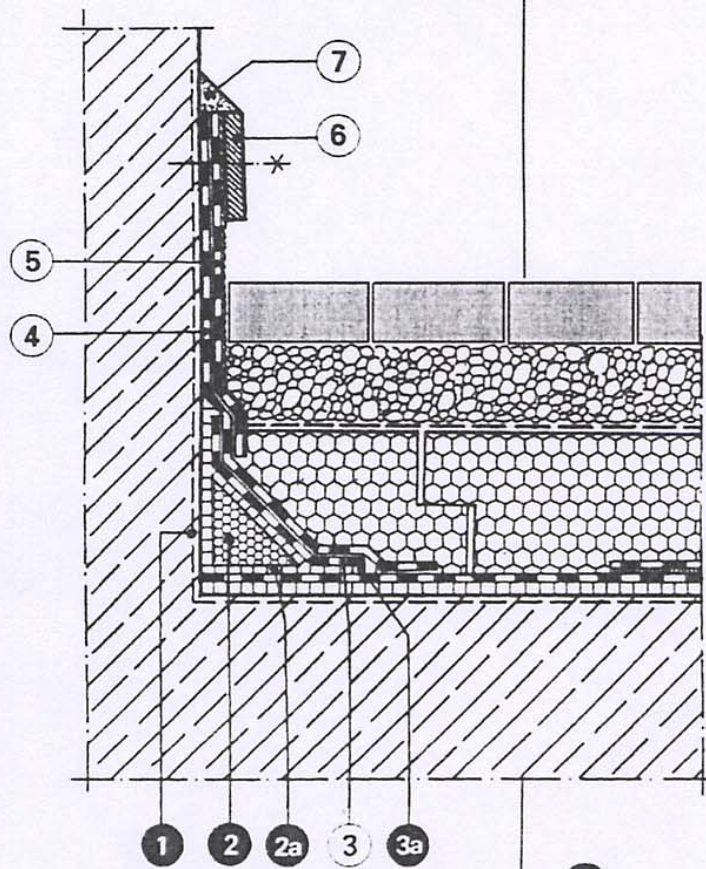


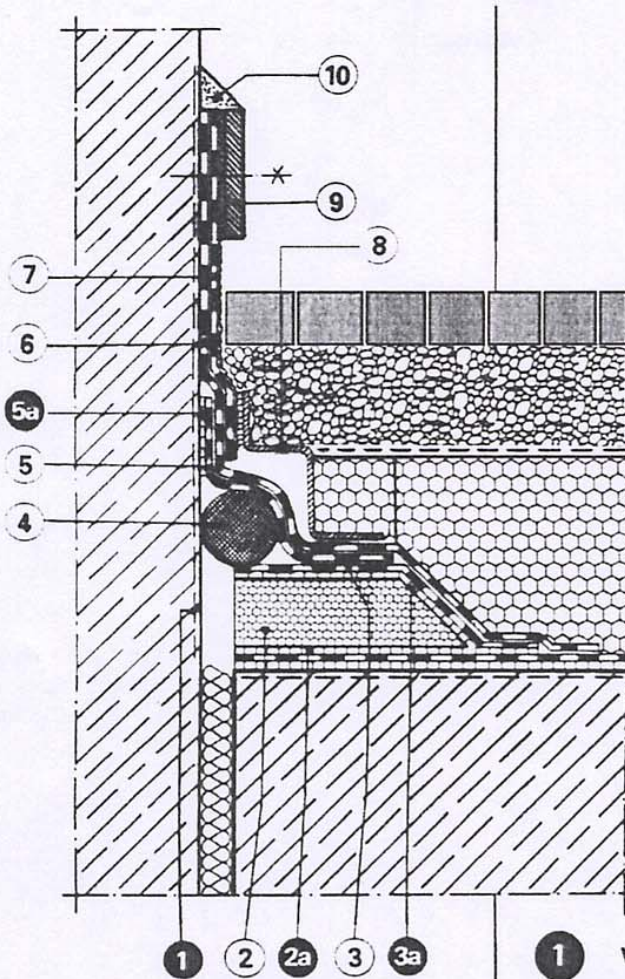
# WIROBIT- Detail 5.2



- 1** WIROBIT-Voranstrich
- 2** WIROBIT-Kautschukbitumenkeil 3/3 cm
- 2a** WIROBIT-Kautschukbitumen
- 3** Bauder PYE-PV 200 S5
- 3a** WIROBIT-Kautschukbitumen
- 4** Bauder PYE-PV 200 S5
- 5** Bauder PYE-PV 200 S5 beschiefert
- 6** Anpreßschiene
- 7** Versiegelung



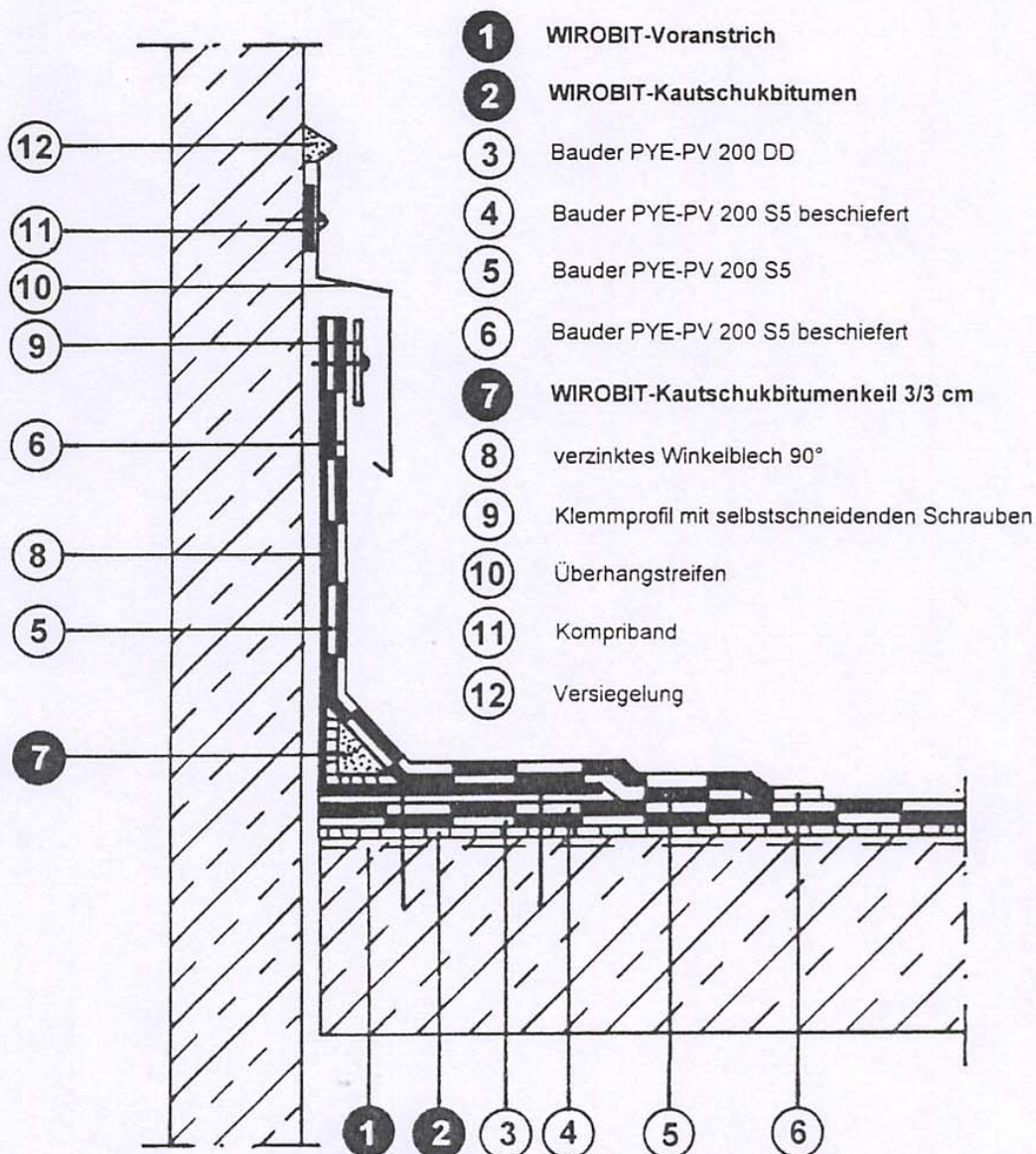
# WIROBIT- Detail 5.4



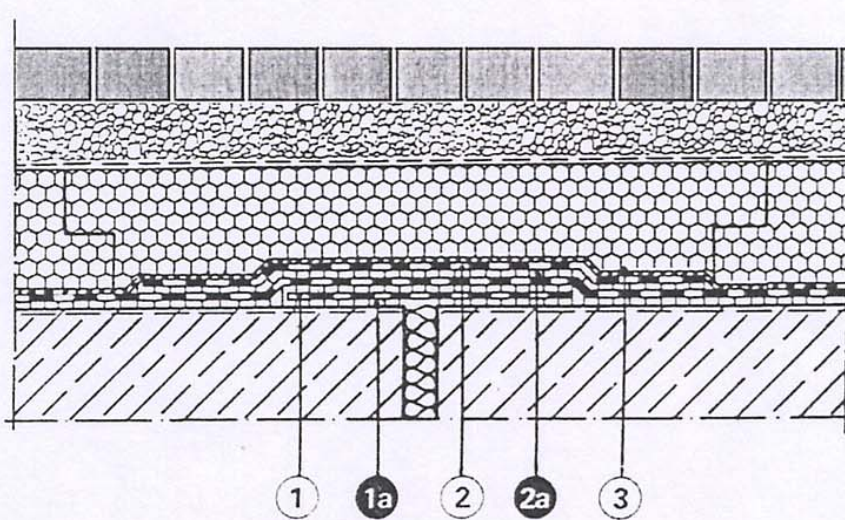
- 1** WIROBIT-Voranstrich
- 2 Schaumglastrapez 13/4/9 cm
- 2a** WIROBIT-Kautschukbitumen
- 3 Bauder G 200 DD
- 3a** WIROBIT-Kautschukbitumen
- 4 Schaumstoff-Rundprofil
- 5 Bauder PV 200 DD
- 5a** WIROBIT-Kautschukbitumen
- 6 Bauder PYE-PV 200 S5
- 7 Bauder PYE-PV 200 S5 beschiefert
- 8 Schutzblech
- 9 Anpreßschiene
- 10 Versiegelung



# WIROBIT- Detail 5.4a



# WIROBIT- Detail 5.6



- ① Bauder PYE-PV 200 DD
- ①a **WIROBIT-Kautschukbitumen**
- ② Bauder PYE-PV 200 DD
- ②a **WIROBIT-Kautschukbitumen**
- ③ Bauder PYE-PV 200 S5 beschiefert